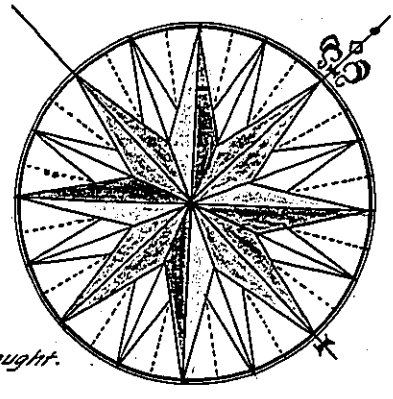


Part of
The Proprietaries Part of the Martins of Parkasea in y^e County of Bucks

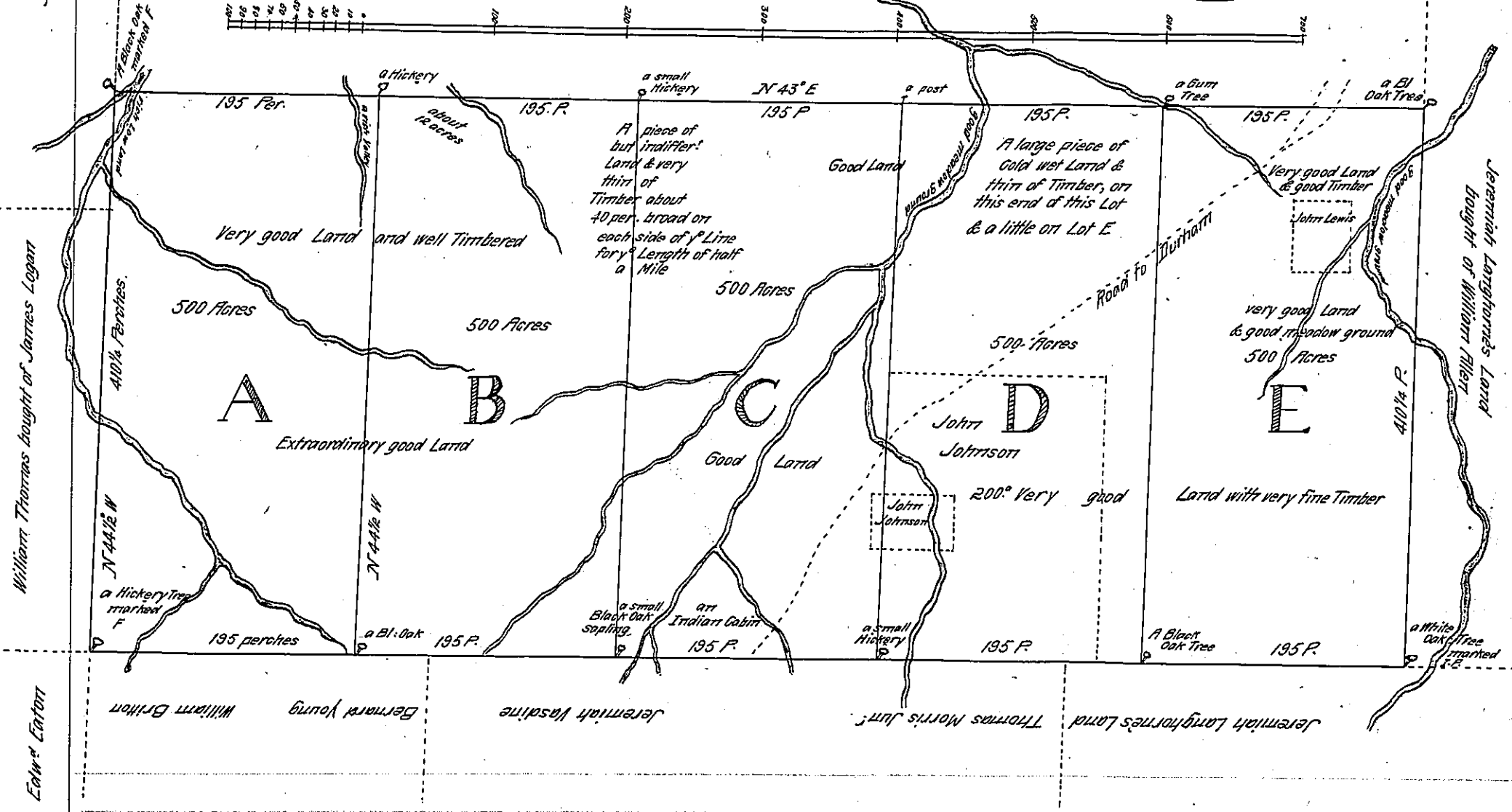
The Magnetical Position
Variation 5°.40' West
Anno Domini
1733



A Draught of Thomas Freemie's Part
of the aforesaid Martins, Divided into
the Lots A, B, C, &c as in the figure underneath.
Surveyed 22^d day of y^e 6th Mo^e 1733.
See the Description of the
Bounds on y^e Back Side } By Benja^s Eastburn.

A Scale of Perches 80 In an Inch

N.B. Trees within the several Lots
are marked with Letters as in the Draught.



Tho^s Freemie's Part of the within mentioned Martins is thus Bounded
Beginning at a Hickery Tree marked F standing at a Corner of William Brittain's Land, being also a Corner of William Thomas's
& of Edw^d Eaton's Land: And running thence along the Line of the s^d William Thomas's & of James Logan's Land; North 44 1/2
degrees West 410 1/4 perches, to a black Oak (standing in the s^d James Logan's Line) marked F. Thence by the other part of the s^d
Martins North 43 deg East 975 per. to a black Oak marked in the Line of Jerem: Langhorne's Land, Thence by y^e s^d Jer:
Langhorne's Land S 44 1/2 E 410 1/4 per. to a White Oak tree marked I.P. in the Line of other Land of y^e s^d Jer: Langhorne,
Thence by the s^d Land & y^e Land of Tho^s Morris Jun^r, Jer: Vasdine, Bernard Young & y^e afores^d William Brittain, S 43° W 975
perches to the place of Beginning, Containing 2500 Acres.

IN TESTIMONY that the above is a copy of the original remaining on file in the Department of
Internal Affairs of Pennsylvania, made conformably to an Act of Assembly
approved the 16th day of February, 1833, I have hereunto set my Hand
and caused the Seal of said Department to be affixed at Harrisburg, this

fourth day of April 1912

Henry Hauck
Secretary of Internal Affairs.